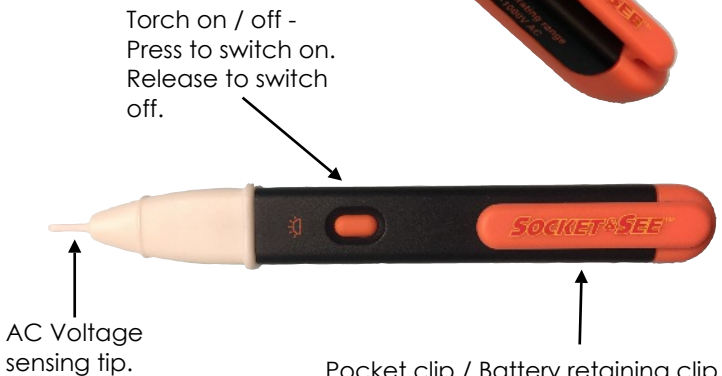


Instructions



Pocket clip / Battery retaining clip -
Gently lift the clip and slide to the rear to access the battery compartment. The unit requires 2 x AAA batteries. Always replace with good quality alkaline batteries.

Specification	
Operating Voltage Range	50 - 1000 VAC
Operating Frequency Range	50 - 60 Hz
Temperature Range	-10°C to 50°C
Humidity	80% max
Safety Standard	BSEN 61010
Batteries	2 x AAA
Dimensions (mm)	150 x 26 x 20
Weight (no batteries)	28 g

Socket & See
Century Road
High Carr Business Park
Newcastle under Lyme
Staffordshire UK
ST5 7UG

Tel: +44 (0) 1782 567096
Fax: +44 (0) 1782 567095

Email: sales@socketandsee.co.uk
Website: www.socketandsee.co.uk



t: 01782 567096 | e: sales@socketandsee.co.uk

Century Road, High Carr Business Park, Newcastle Under Lyme, Staffordshire, ST5 7UG
Socket & See is a trading division of UK Test Instruments Ltd.



VVD PRO





Vibrating Non Contact
AC Voltage Detector

Instruction Manual & Specification



1. Safety

1.1 Equipment Markings

	Caution! Refer to the instruction manual
	Construction is double insulated
	Product should be recycled as electronic waste
	Conforms to EU standards
CAT IV	Measurement Category IV is applicable to testing and measuring circuits connected at the source of the buildings low-voltage MAINS installation. This part of the installation is expected to have a minimum of one level of over-current protection between the transformer and the point of measuring. Examples of CAT IV are measurements on devices installed before the main fuse or circuit breaker in the building's installation

1.2 Operational Safety

Always refer to the manual

This product is designed for use by competent persons with appropriate training.

Do not use the product if there is any sign of cracks or other damage.

Use only on electrical systems within the specified voltage range (50 - 1000 VAC). Always test for correct operation on a known live voltage source before and after use.

During operation hold the voltage indicator firmly.

This tester must be used in accordance with these instructions, it must not be used in any other non intended way.

1.3 Limitations of Using the VVD PRO to detect Hazardous Voltages

When testing flexible cables, move the tip along the cable as the twisted construction of cables means the voltage field from live and neutral can cancel each other out.

This tester may not indicate a live conductor within steel boxes, trunking, conduit or SWA (Steel Wire Armoured) cables.

The limitation of any single pole voltage tester is that a "ghost voltage" may indicate a voltage present greater than 50 VAC.

Ghost voltages that appear to be greater than 50 VAC may not be dangerous. However, to prove if the voltage indicated is a ghost or dangerous real voltage, a quality two pole tester, (such as one from the Socket & See VIP range) should be used to prove the indication.

2. Description

The VVD PRO non contact voltage detector is intended to check for the presence of dangerous AC voltages. Voltage presence is indicated by a bright red LED situated within the white tip of the unit and the tester vibrating.

2.1 Features

1. Visual indication of volts present given by a flashing RED LED
2. Physical indication of volts present given by vibration
3. Balanced sensitivity for more accurate detection
4. Bright LED torch
5. Robust and ergonomic construction
6. Handy pocket size
7. 50 - 1000 VAC 50-60 Hz
8. Suitable for CAT IV use.

3. Maintenance and Service

When installing batteries observe correct polarity. Do not mix new and old batteries. Dispose of used batteries in accordance with local regulations.

With the exception of batteries there are no user serviceable parts.